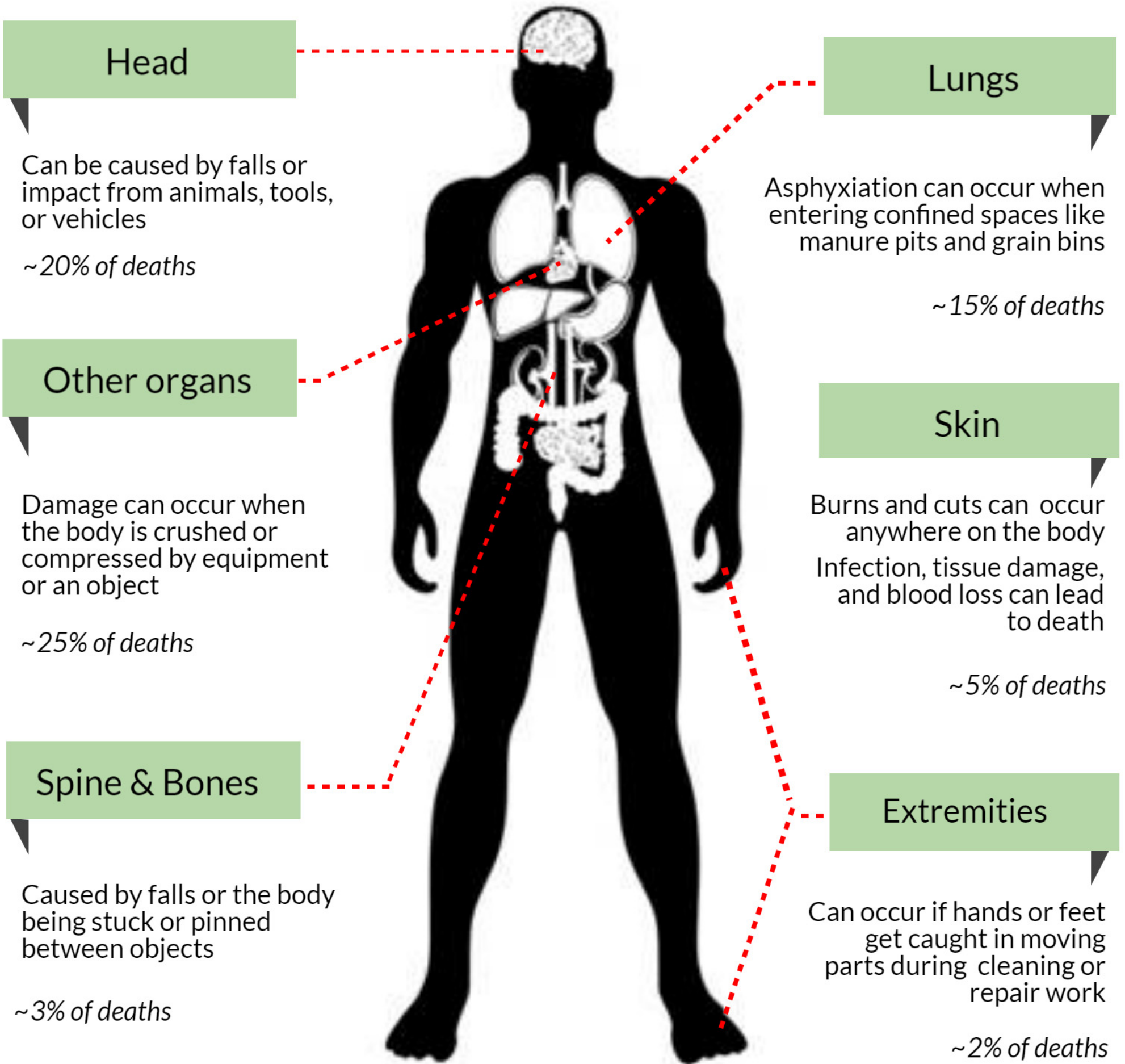


How Farmers Get Hurt

Hazards on the farm

Many types of hazards threaten farm workers including physical stress, exposure to machinery, livestock, chemicals, and noise. All of these hazards can lead to a variety of injuries.

Below are examples of how Midwestern farmers have been fatally injured.



For more information
check our website

www.gpcah.org



Follow us on Facebook and Pinterest!

www.facebook.com/GPCAH



www.pinterest.com/GPCAHAFF

