

# Student Services - Third Floor | Emergency Map



Fire Extinguisher



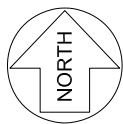
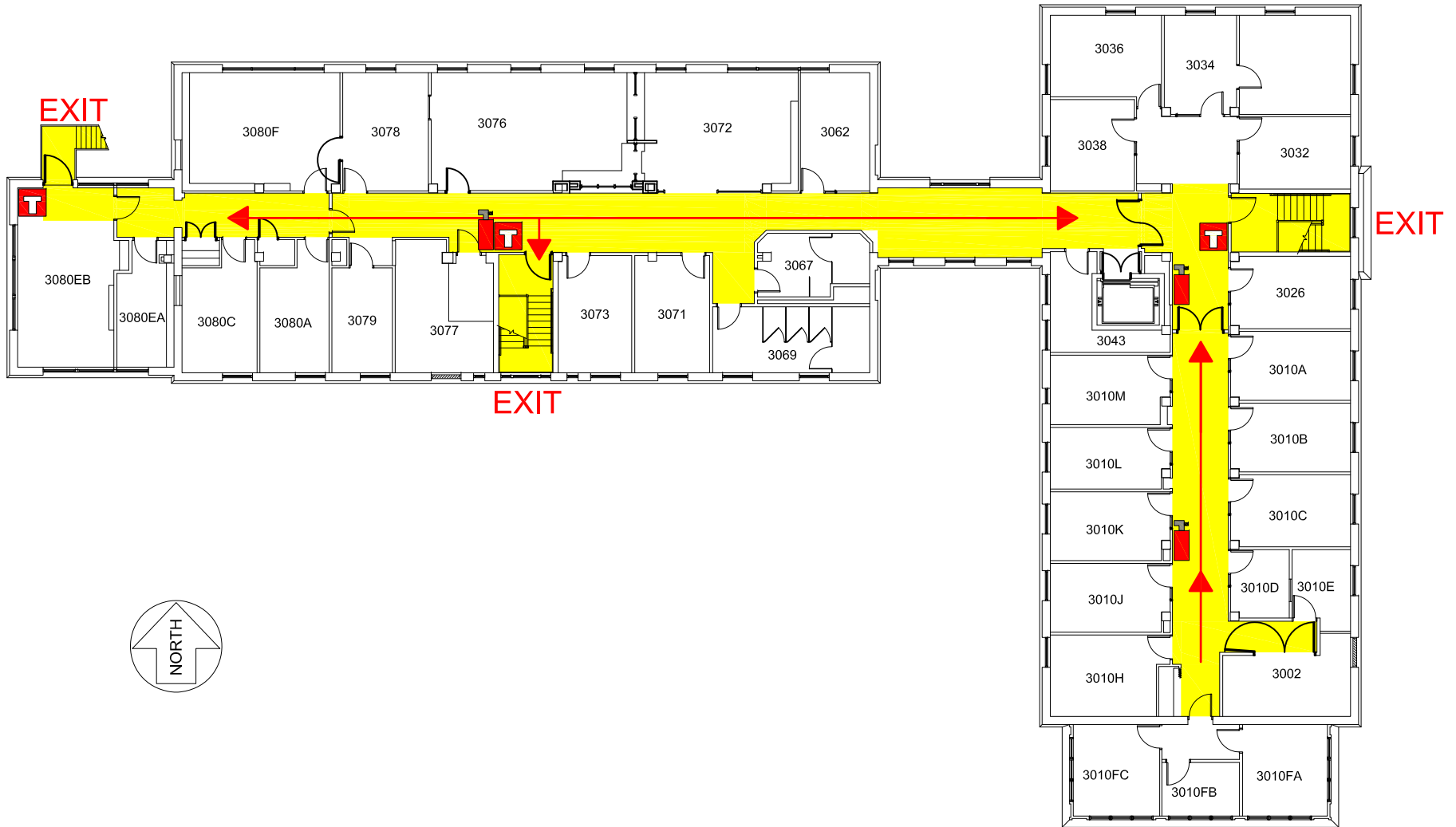
Fire Alarm

**EXIT**

Emergency Exit



Exit Route



## EMERGENCY RESPONSE GUIDE

EMERGENCY CONTACT INFORMATION

Familiarize yourself with the  
**Emergency Response Guide**  
[ehs.iastate.edu/prep/erg](http://ehs.iastate.edu/prep/erg)

**CALL 911  
FOR ALL EMERGENCIES**



**AED located on First Floor**



**Severe Weather Shelter  
located on Ground Floor**



**Evacuation Meeting Place :**

Assemble in the parking lot south  
of the building following evacuation.