

# Parks Library - Ground Floor (North) | Emergency Map



Fire Extinguisher



Severe Weather Shelter



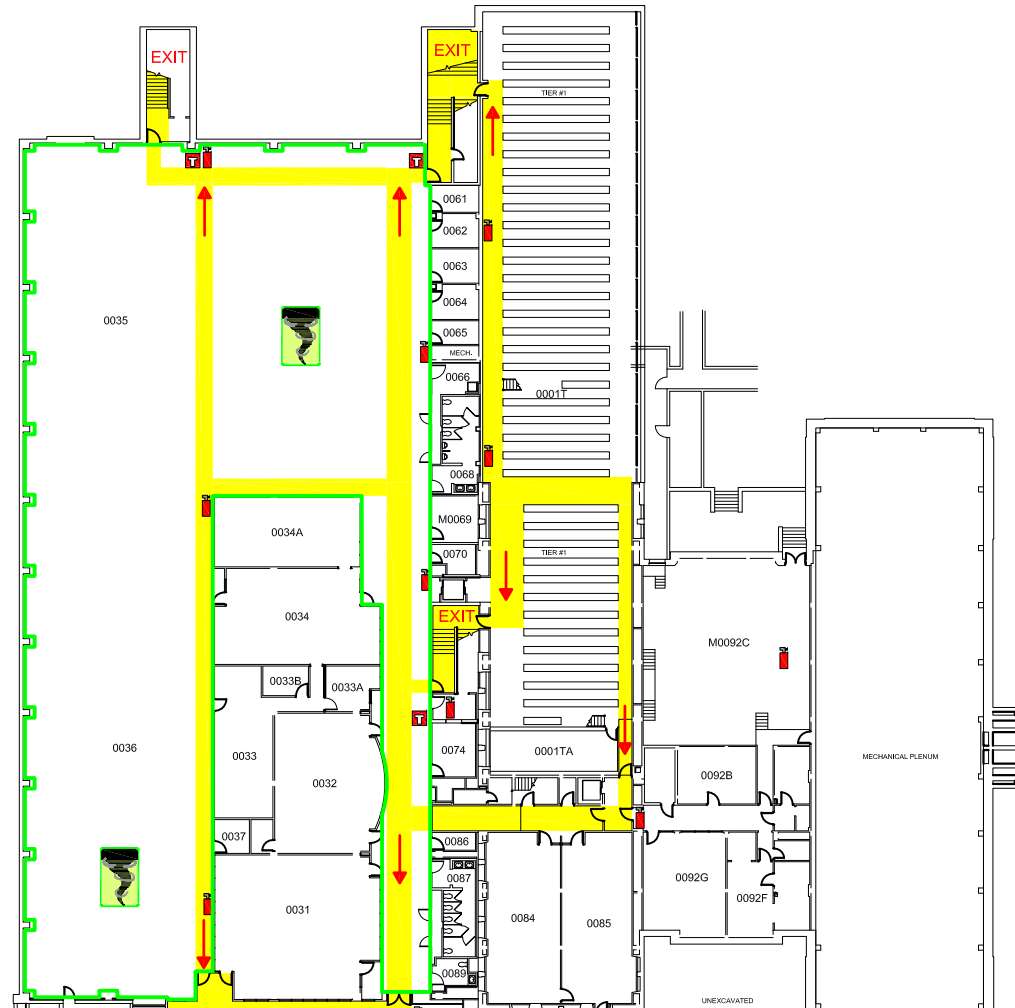
Fire Alarm

**EXIT**

Emergency Exit



Exit Route



## EMERGENCY RESPONSE GUIDE



Familiarize yourself with the  
**Emergency Response Guide**  
[ehs.iastate.edu/prep/erg](https://ehs.iastate.edu/prep/erg)

**CALL 911  
FOR ALL EMERGENCIES**



**AED located on 1st Floor**



**Evacuation Meeting Place :**  
Assemble in the grass lot south of  
the building following evacuation.