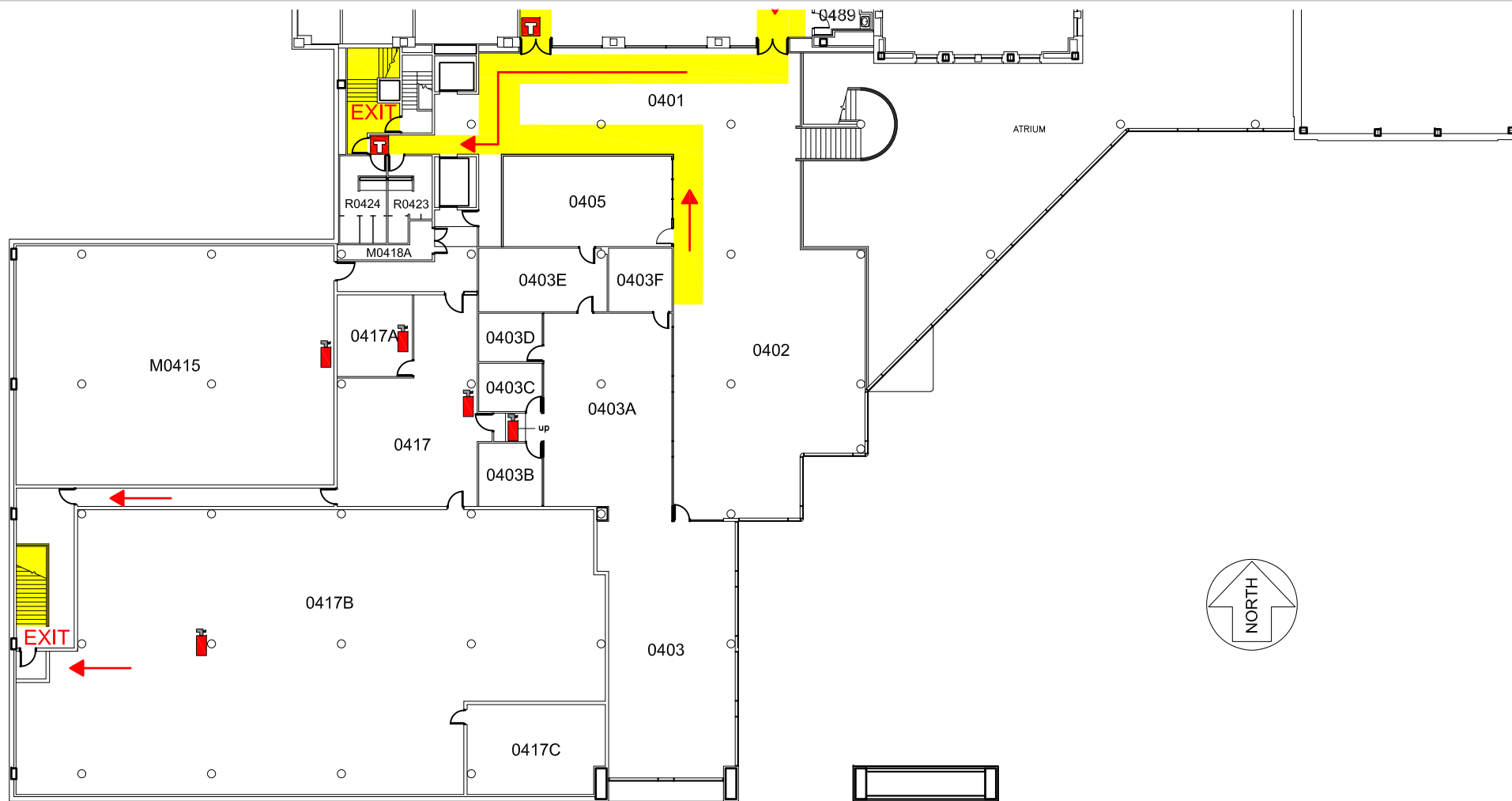


# Parks Library - Fourth Floor (South) | Emergency Map

 Fire Extinguisher 
  Fire Alarm 
 **EXIT** Emergency Exit 
  Exit Route



**EMERGENCY RESPONSE GUIDE**



EMERGENCY CONTACT INFORMATION

Familiarize yourself with the **Emergency Response Guide**  
[ehs.iastate.edu/prep/erg](http://ehs.iastate.edu/prep/erg)

**CALL 911 FOR ALL EMERGENCIES**



**AED located on 3rd Floor**

**Severe Weather Shelter located on Ground Floor**



**Evacuation Meeting Place :**  
 Assemble in the grass lot south of the building following evacuation.