

# Simon Estes Music Hall - Second Floor | Emergency Map



Fire Extinguisher



Fire Alarm



Severe Weather Shelter



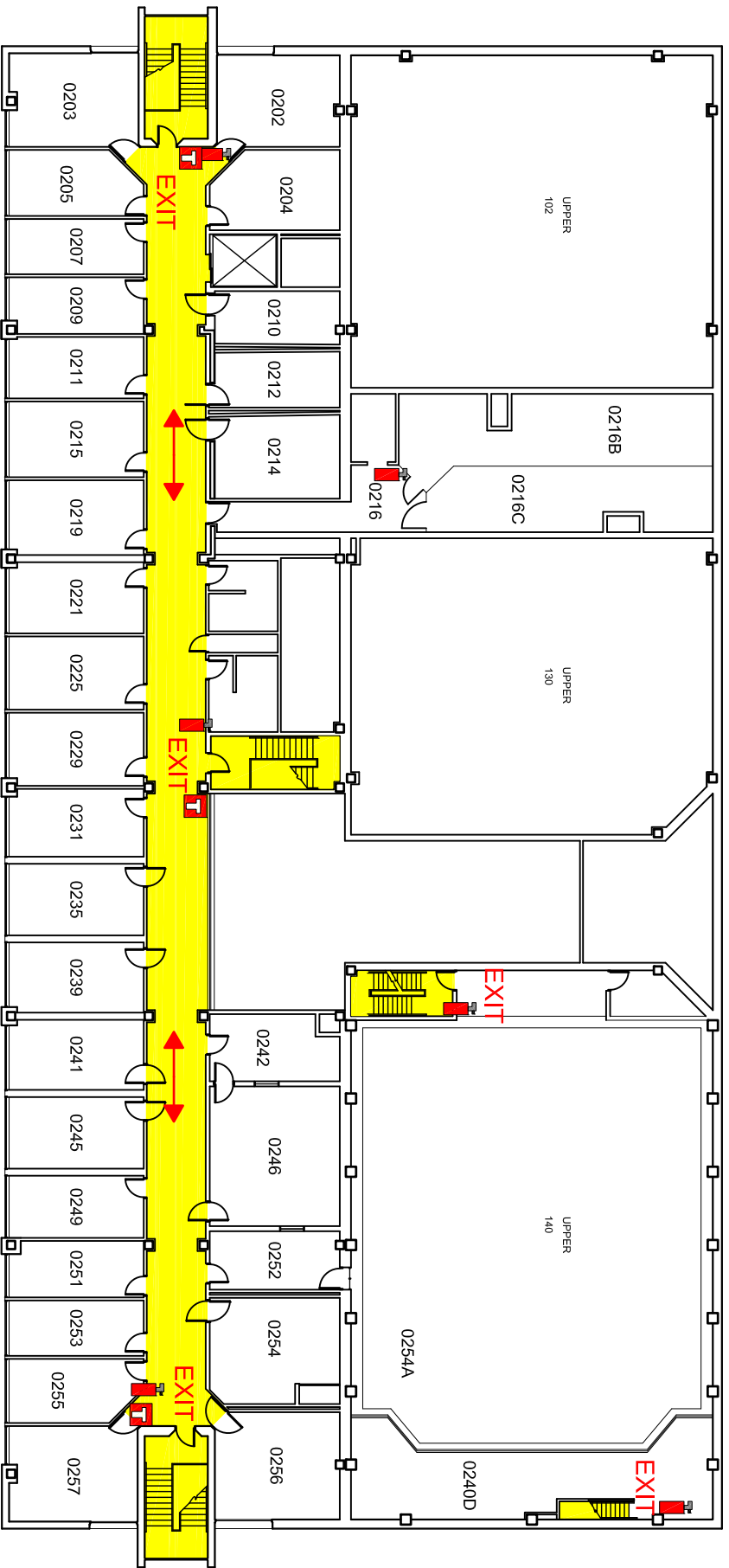
AED

**EXIT**

Emergency Exit



Exit Route



## EMERGENCY RESPONSE GUIDE



EMERGENCY CONTACT INFORMATION

Fire	911
Severe Weather	911
Medical	911
Firearm	911

Familiarize yourself with the  
**Emergency Response Guide**  
[ehs.iastate.edu/prep/erg](http://ehs.iastate.edu/prep/erg)

CALL 911  
 FOR ALL EMERGENCIES



Severe Weather Shelter in  
 Basement



AED on 1st Floor



Evacuation Meeting Place :

Grassy area Northeast of the building.