

Carver Hall - Third Floor | Emergency Map



Fire Extinguisher



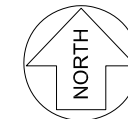
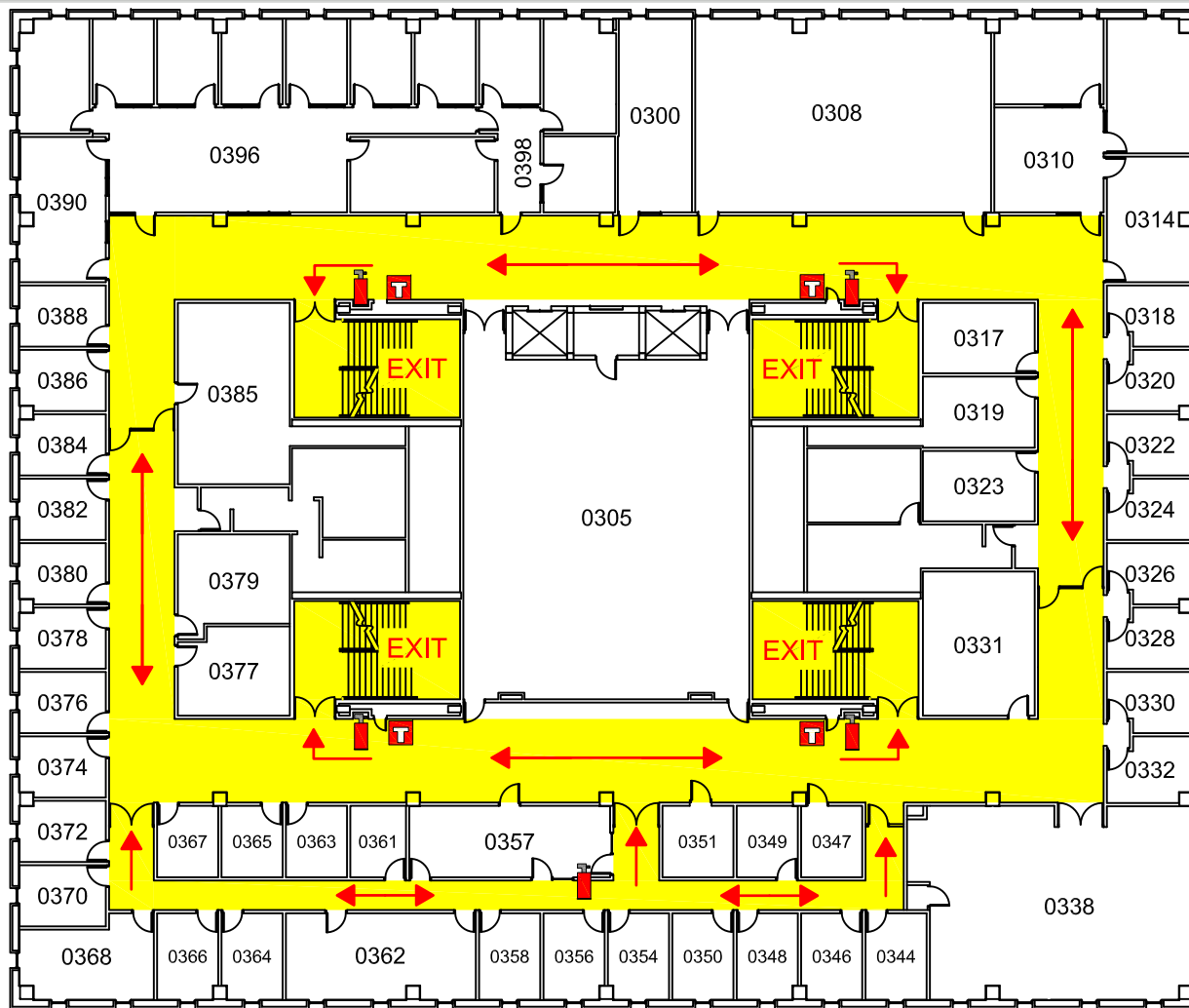
Fire Alarm

EXIT

Emergency Exit



Exit Route



EMERGENCY RESPONSE GUIDE

EMERGENCY CONTACT INFORMATION

Familiarize yourself with the **Emergency Response Guide**
ehs.iastate.edu/prep/erg

**CALL 911
 FOR ALL EMERGENCIES**



AED located on 1st Floor



Severe Weather Shelter
 in Basement Hallways.



Evacuation Meeting Place :
 Assemble in the grass lot west of
 Beardshear Hall following evacuation.