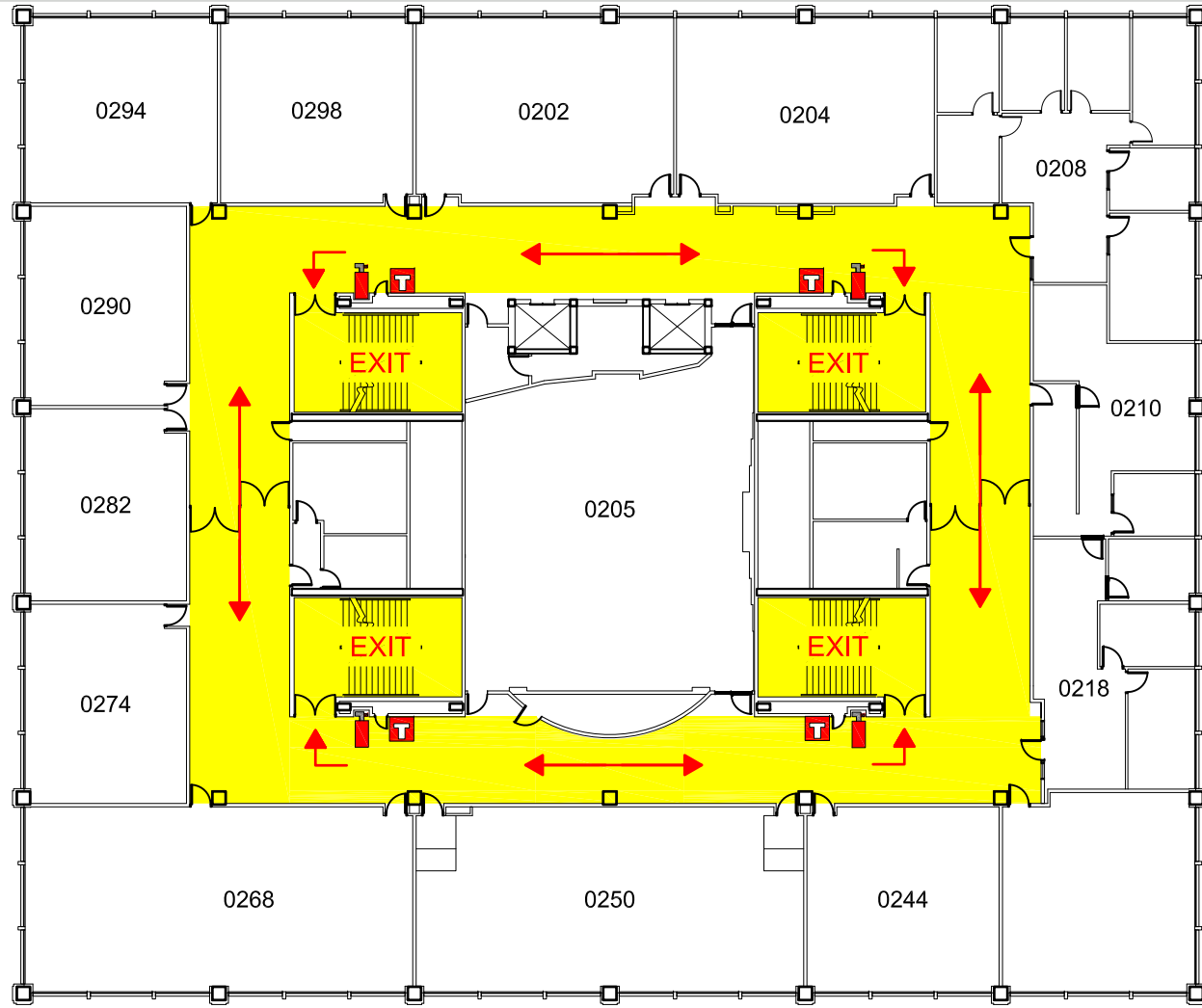


Carver Hall - Second Floor | Emergency Map

 Fire Extinguisher
  Fire Alarm
 EXIT Emergency Exit
  Exit Route



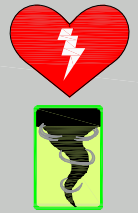
EMERGENCY RESPONSE GUIDE



EMERGENCY CONTACT INFORMATION

Familiarize yourself with the **Emergency Response Guide**
ehs.iastate.edu/prep/erg

CALL 911 FOR ALL EMERGENCIES



AED located on 1st Floor

Severe Weather Shelter in Basement Hallways.



Evacuation Meeting Place :
 Assemble in the grass lot west of Beardshear Hall following evacuation.