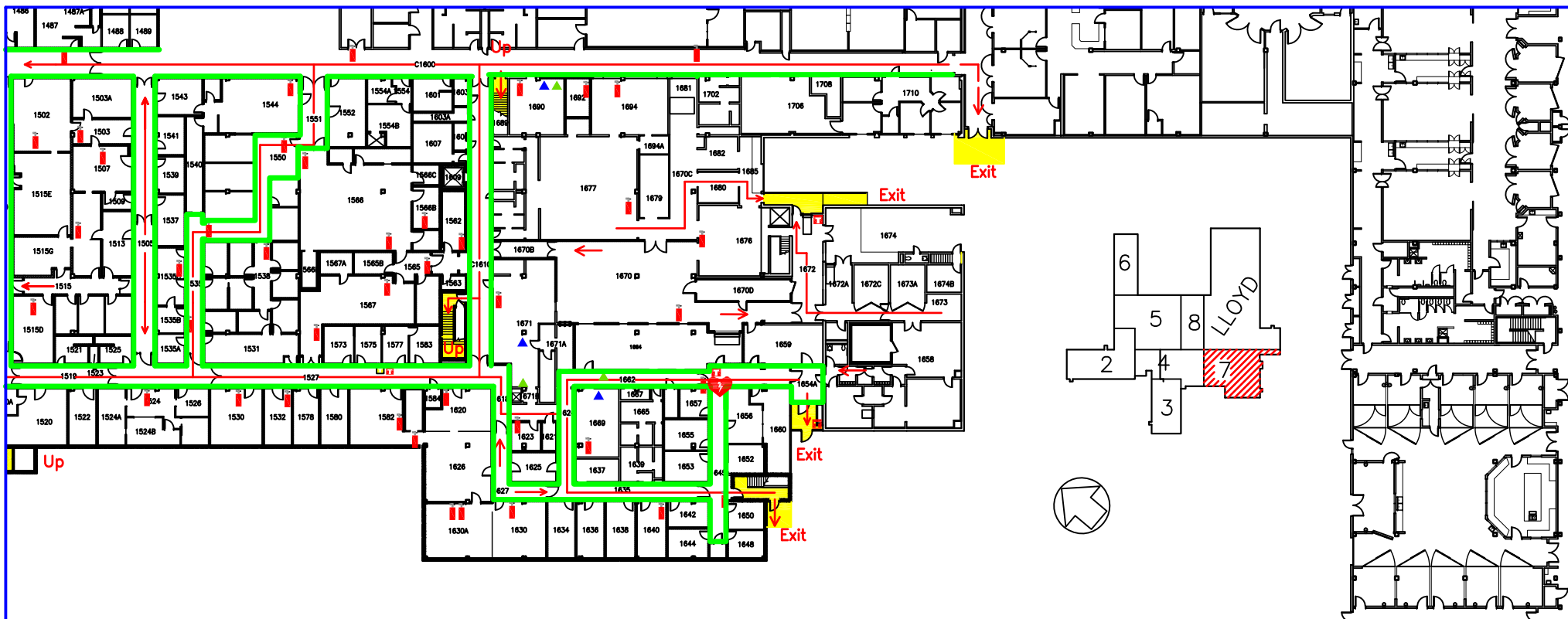











Veterinary Medicine 1st Floor Emergency Map



- | | | |
|---|---|--|
|  Exit |  Exit Direction |  Severe Weather Shelter |
|  Fire Extinguisher |  AED/Defibrillator by 2nd Floor Library and VDL |  Eye Wash |
|  Alarm Pull Station |  Chemical Spill Pull |  Safety Shower |

Severe Weather

- In the event of severe weather, proceed an interior hallway in the basement. Keep away from exterior doors and windows.

Evacuation Guidelines

- Exit in a calm and orderly fashion. Once you have evacuated to a safe location immediately call 911.
- Assist injured personnel, if time permits, and make sure all doors are closed and hazardous work operations are shut down as you exit the building.
- Help any physically impaired individuals in need of assistance.
- **Meeting Place :**
In the event of an evacuation, please proceed to the grassy area south of Lot 96.

Safety Guidelines

- Familiarize yourself with the location of exits and fire extinguishers.
- Attempt to control a fire yourself with a fire extinguisher only when the fire is small and you have been trained.
- Keep fire doors closed to prevent the spread of smoke and fire.