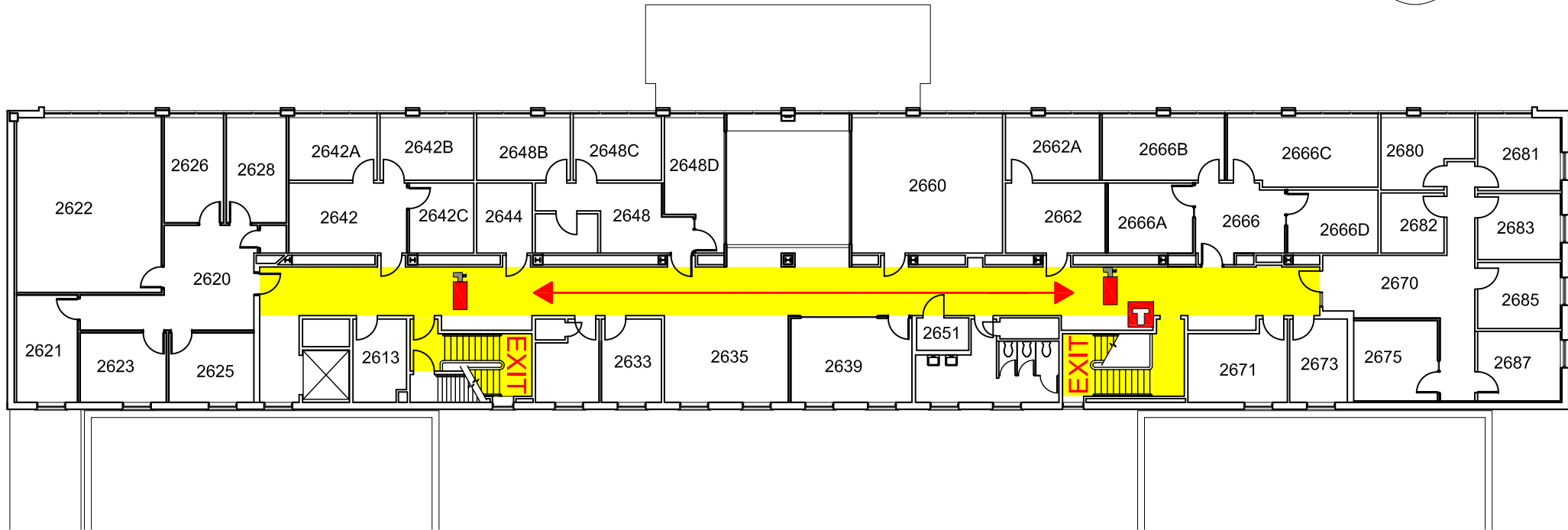
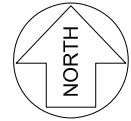


# Lagomarcino Hall - Second Floor | Emergency Map



**EMERGENCY RESPONSE GUIDE**

EMERGENCY CONTACT INFORMATION

Familiarize yourself with the **Emergency Response Guide**  
[ehs.iastate.edu/prep/erg](http://ehs.iastate.edu/prep/erg)

**CALL 911  
 FOR ALL EMERGENCIES**



**AED on First Floor**

**Severe Weather Shelter  
 in Basement**



**Evacuation Meeting Place :**  
 Assemble in the grass area south  
 of the building following evacuation.