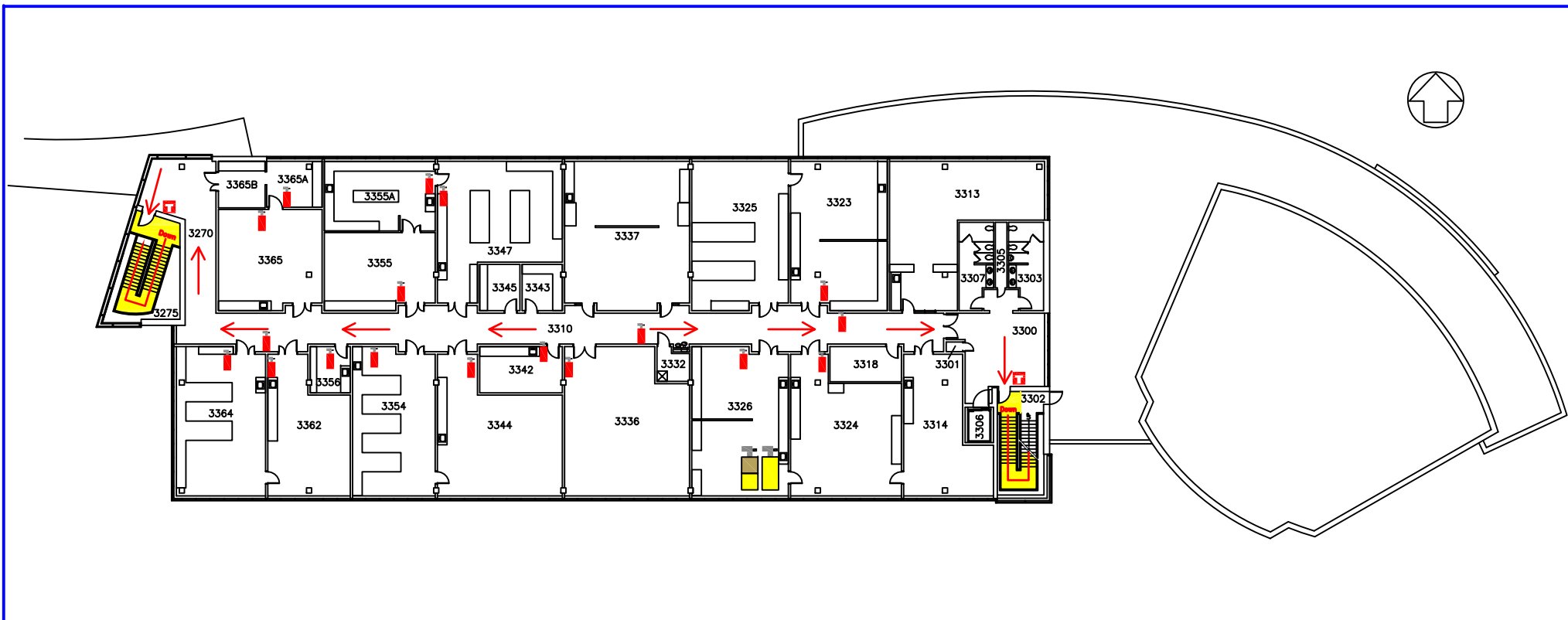









Hoover Hall - Third Floor Emergency Map



Key

-  Exit
-  Fire Extinguisher
-  Exit Direction
-  Class D Cu Powder Fire Ext. (Lithium metal fires)
-  Class D NaCl Powder Fire Ext. (Other metal fires)
-  Fire Alarm Pull Station
-  AED/Defibrillator on First Floor

Severe Weather

- In the event of severe weather, proceed to an internal room on a lower floor. Keep away from exterior doors and windows.

Evacuation Guidelines

- Exit in a calm and orderly fashion. Once you have evacuated to a safe location immediately call 911.
- Assist injured personnel, if time permits, and make sure all doors are closed and hazardous work operations are shut down as you exit the building.
- Help any physically impaired individuals in need of assistance.
- **Meeting Place :**
In the event of an evacuation, proceed to the meeting area on the East side of Marston Hall.

Safety Guidelines

- Familiarize yourself with the location of exits and fire extinguishers.
- Attempt to control a fire yourself with a fire extinguisher only when the fire is small and you have been trained.
- Keep fire doors closed to prevent the spread of smoke and fire.