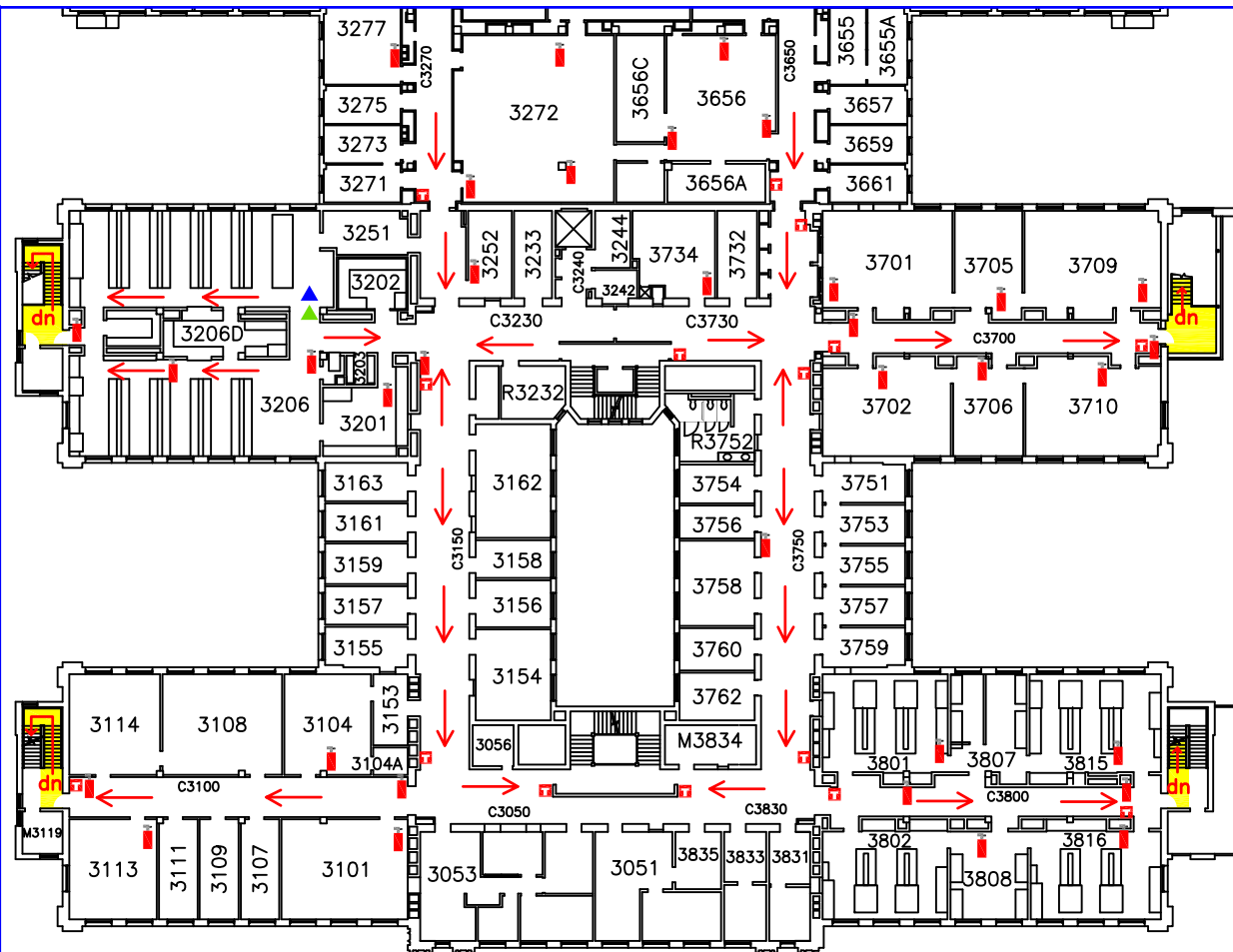


Gilman Hall - Third Floor (South) Emergency Map



Evacuation Guidelines




- In case of fire or other emergency requiring evacuation, activate the nearest fire alarm pull station.
- Exit in a calm and orderly fashion. Once you have evacuated to a safe location immediately call 911.
- Assist injured personnel, if time permits, and make sure all doors are closed and hazardous work operations are shut down as you exit the building.
- Help any physically impaired individuals in need of assistance.
- **Meeting Place :**

In the event of an evacuation, please proceed to the grassy area to the West of the building.

Safety Guidelines

- Familiarize yourself with the location of exits, alarm pull stations, and fire extinguishers.
- Attempt to control a fire yourself with a fire extinguisher only when the fire is small and you have been trained.
- Keep fire doors closed to prevent the spread of smoke and fire.

Key

-  Fire Extinguisher
-  Fire Alarm Pull
-  AED/Defibrillator

 Exit Direction

 Exit

 Eye Wash

 Safety Shower



Severe Weather

In the event of severe weather, proceed to an interior room on a lower level. Keep away from exterior doors and windows.