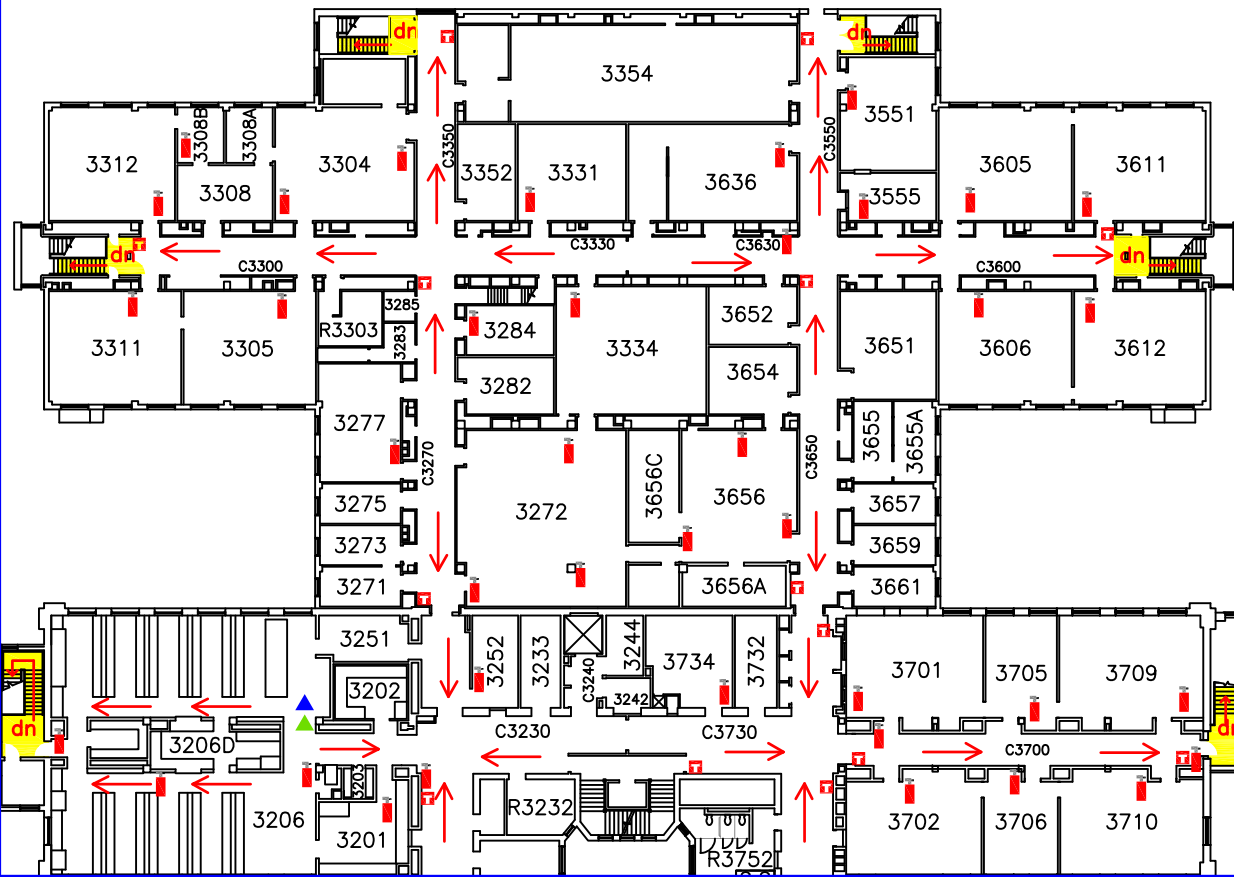


Gilman Hall - Third Floor (North) Emergency Map



Evacuation Guidelines

- In case of fire or other emergency requiring evacuation, activate the nearest fire alarm pull station.
- Exit in a calm and orderly fashion. Once you have evacuated to a safe location immediately call 911.
- Assist injured personnel, if time permits, and make sure all doors are closed and hazardous work operations are shut down as you exit the building.
- Help any physically impaired individuals in need of assistance.
- **Meeting Place :**

In the event of an evacuation, please proceed to the grassy area on the West side of the building.

Safety Guidelines

- Familiarize yourself with the location of exits, alarm pull stations, and fire extinguishers.
- Attempt to control a fire yourself with a fire extinguisher only when the fire is small and you have been trained.
- Keep fire doors closed to prevent the spread of smoke and fire.

Severe Weather

In the event of severe weather, proceed to an interior room on a lower level. Keep away from exterior doors and windows.

Key

- | | | | |
|--|--------------------------|--|----------------|
| | Fire Extinguisher | | Exit Direction |
| | Fire Alarm Pull | | Exit |
| | AED/Defibrillator on 1st | | Eye Wash |
| | | | Safety Shower |