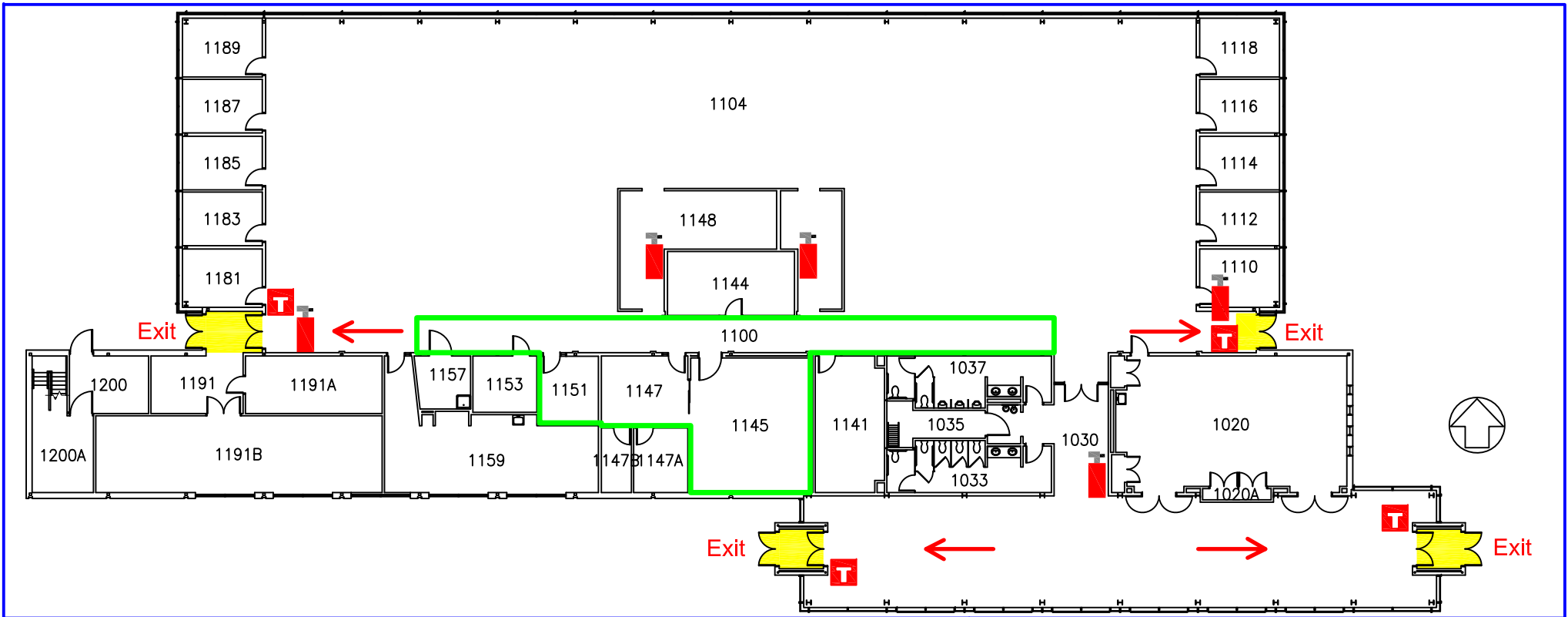



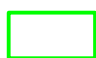


Extension 4-H Emergency Map



Key

-  Exit
-  Fire Extinguisher
-  Exit Direction
-  Severe Weather Shelter

Severe Weather

- In the event of severe weather, proceed to the Extension Workroom; Library; Rooms 1141, 1145, 1147, or 1151. Stay away from exterior windows and doors.

Evacuation Guidelines

- Exit in a calm and orderly fashion. Once you have evacuated to a safe location immediately call 911.
- Assist injured personnel, if time permits, and make sure all doors are closed and hazardous work operations are shut down as you exit the building.
- Help any physically impaired individuals in need of assistance.
- **Meeting Place :**
In case of evacuation, patio area on the West side of ASB.

Safety Guidelines

- Familiarize yourself with the location of exits and fire extinguishers.
- Attempt to control a fire yourself with a fire extinguisher only when the fire is small and you have been trained.
- Keep fire doors closed to prevent the spread of smoke and fire.