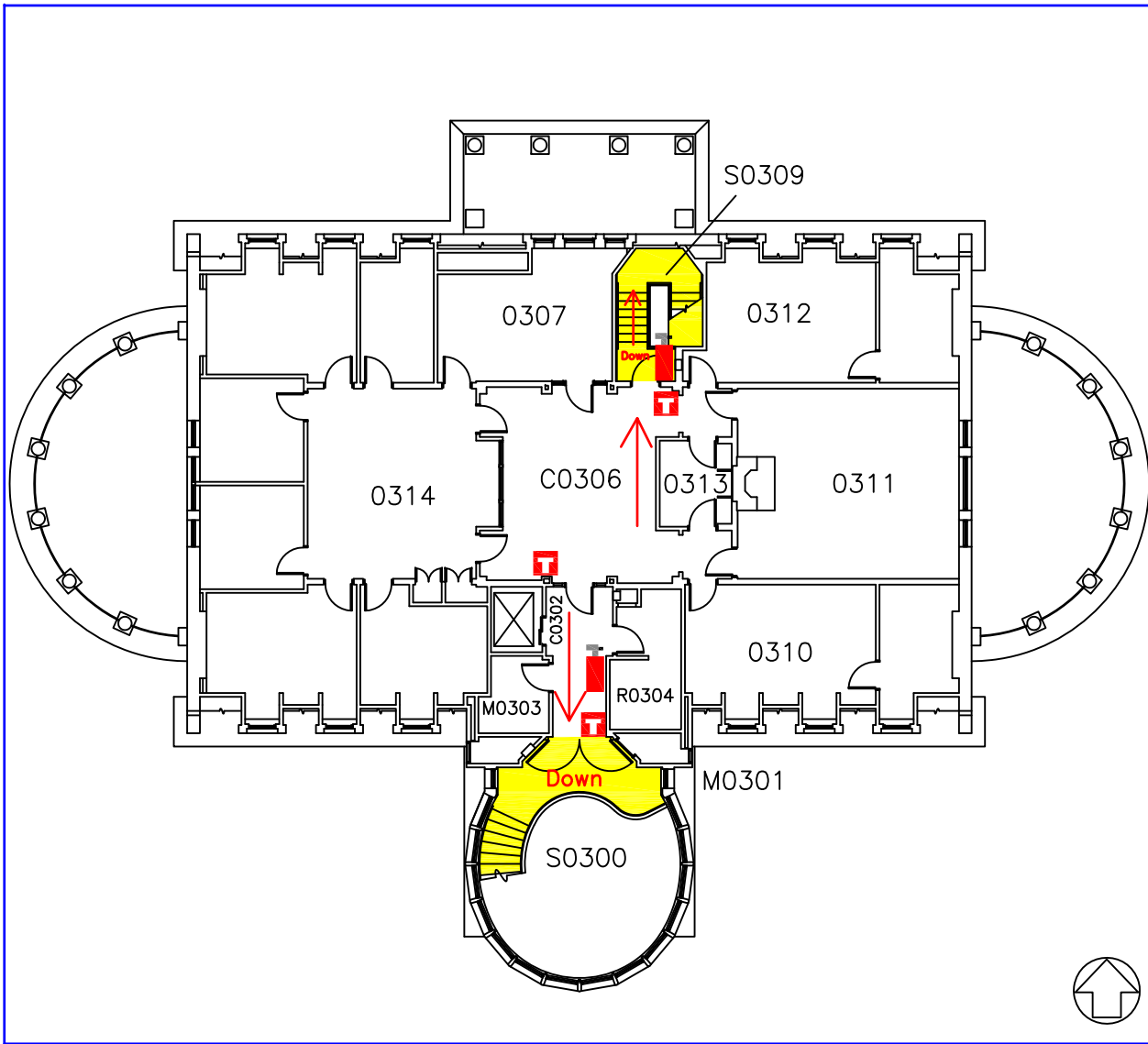


Enrollment Services Center - Third Floor **Emergency Map**



Evacuation Guidelines



- In case of fire or other emergency requiring evacuation, activate the nearest fire alarm pull station.
- Exit in a calm and orderly fashion. Once you have evacuated to a safe location immediately call 911.
- Assist injured personnel, if time permits, and make sure all doors are closed and hazardous work operations are shut down as you exit the building.
- Help any physically impaired individuals in need of assistance.
- **Meeting Place :**




In the event of an evacuation, please proceed to the grassy area immediately North of the building.

Safety Guidelines

- Familiarize yourself with the location of exits, alarm pull stations, and fire extinguishers.
- Attempt to control a fire yourself with a fire extinguisher only when the fire is small and you have been trained.
- Keep fire doors closed to prevent the spread of smoke and fire.

Key

-  Fire Extinguisher
-  Fire Alarm Pull

-  Exit Direction
-  Exit
-  AED / Defibrillator on First Floor

Severe Weather

- In the event of severe weather, proceed to an interior room on the lower level. Keep away from exterior doors and windows.