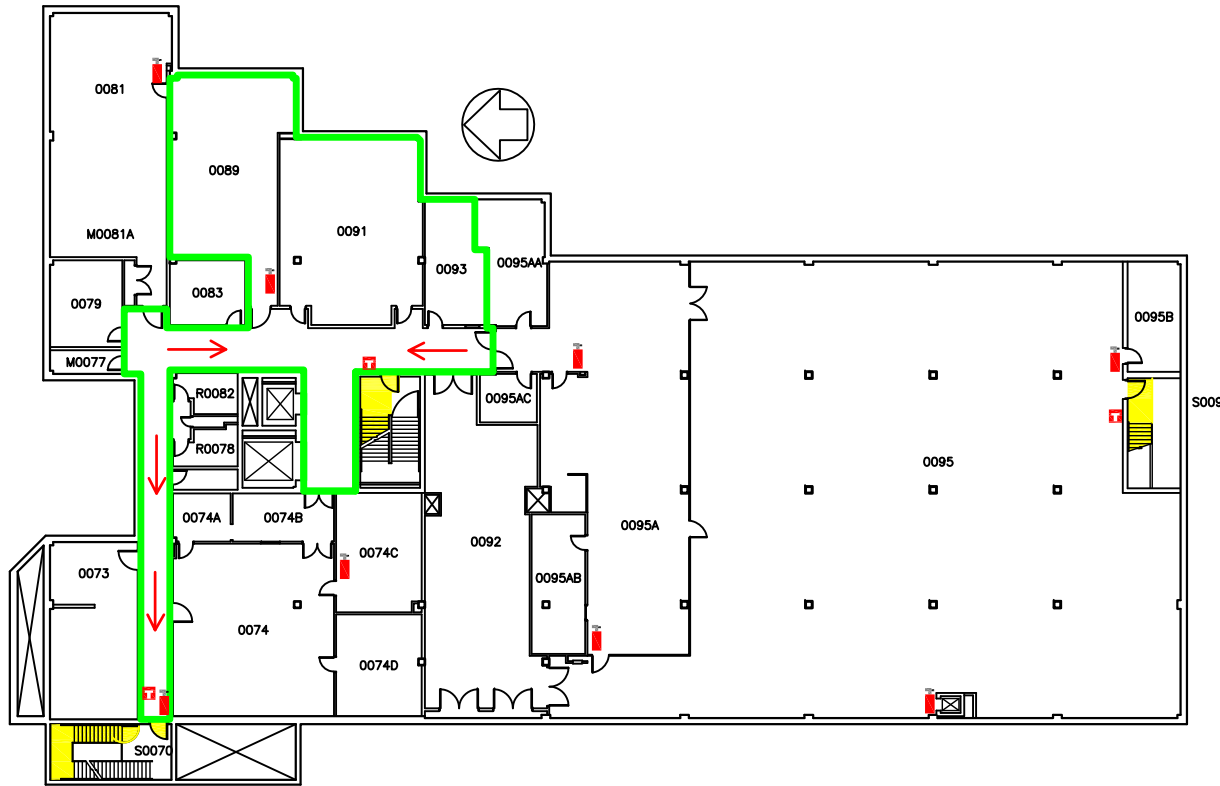




# Durham Center Basement Emergency Map



## Key

-  Exit
-  Fire Extinguisher



Exit Direction



Severe Weather Shelter



AED / Defibrillator  
on First Floor

## Severe Weather

- In the event of severe weather, proceed to an interior hallway or room on the lowest level of the building. Keep away from doors and windows.

## Evacuation Guidelines

- Exit in a calm and orderly fashion. Once you have evacuated to a safe location immediately call 911.
- Assist injured personnel, if time permits, and make sure all doors are closed and hazardous work operations are shut down as you exit the building.
- Help any physically impaired individuals in need of assistance.
- **Meeting Place :**  
In the event of evacuation, please proceed to front overhang of Parks Library.

## Safety Guidelines

- Familiarize yourself with the location of exits and fire extinguishers.
- Attempt to control a fire yourself with a fire extinguisher only when the fire is small and you have been trained.
- Keep fire doors closed to prevent the spread of smoke and fire.