

Durham Center - Second Floor Emergency Map

Evacuation Guidelines

- In case of fire or other emergency requiring evacuation, activate the nearest fire alarm pull station.
- Exit in a calm and orderly fashion. Once you have evacuated to a safe location immediately call 911.
- Assist injured personnel, if time permits, and make sure all doors are closed and hazardous work operations are shut down as you exit the building.
- Help any physically impaired individuals in need of assistance.
- **Meeting Place :**

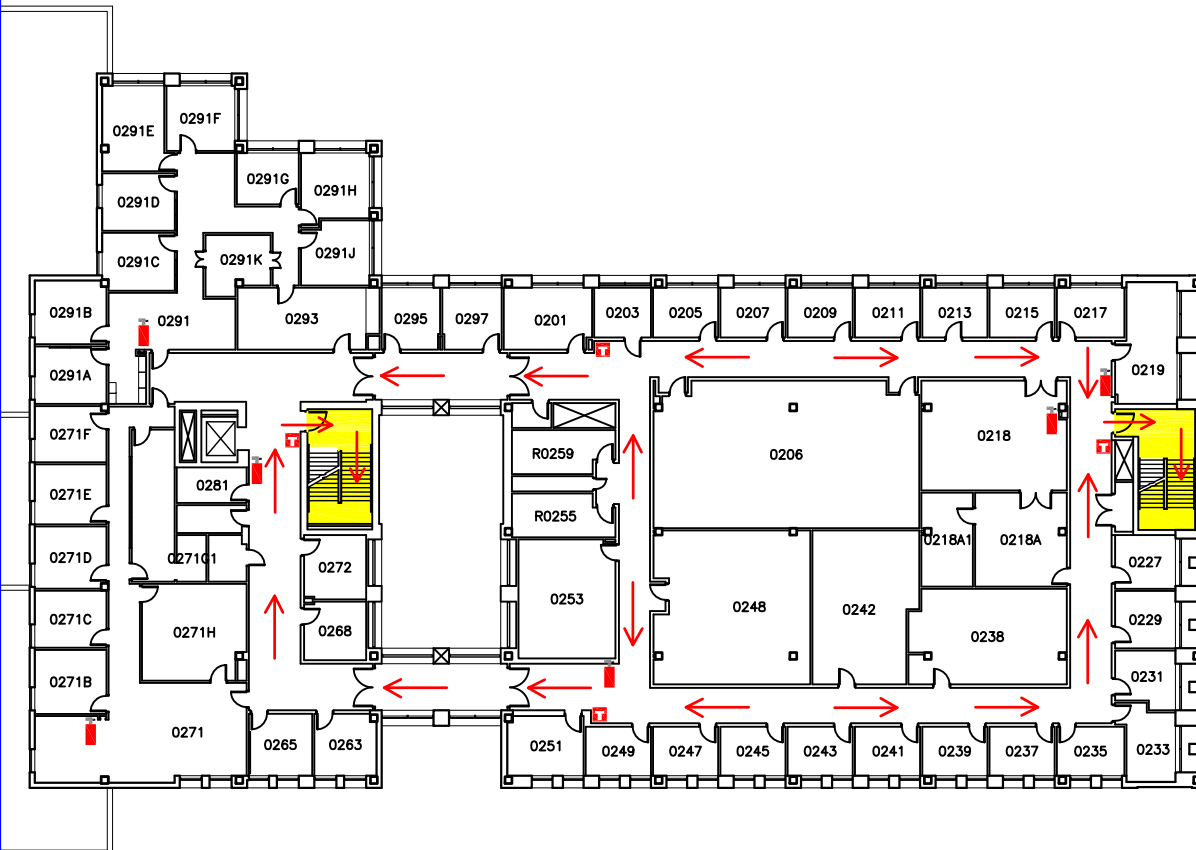
In the event of an evacuation, please proceed to the front overhang of Parks Library.

Safety Guidelines

- Familiarize yourself with the location of exits, alarm pull stations, and fire extinguishers.
- Attempt to control a fire yourself with a fire extinguisher only when the fire is small and you have been trained.
- Keep fire doors closed to prevent the spread of smoke and fire.

Severe Weather

- In the event of severe weather, proceed to an interior hallway or room on the lowest level of the building. Keep away from exterior doors and windows.



Key



Fire Extinguisher



Fire Alarm Pull



Exit Direction



Exit



AED / Defibrillator
on First Floor