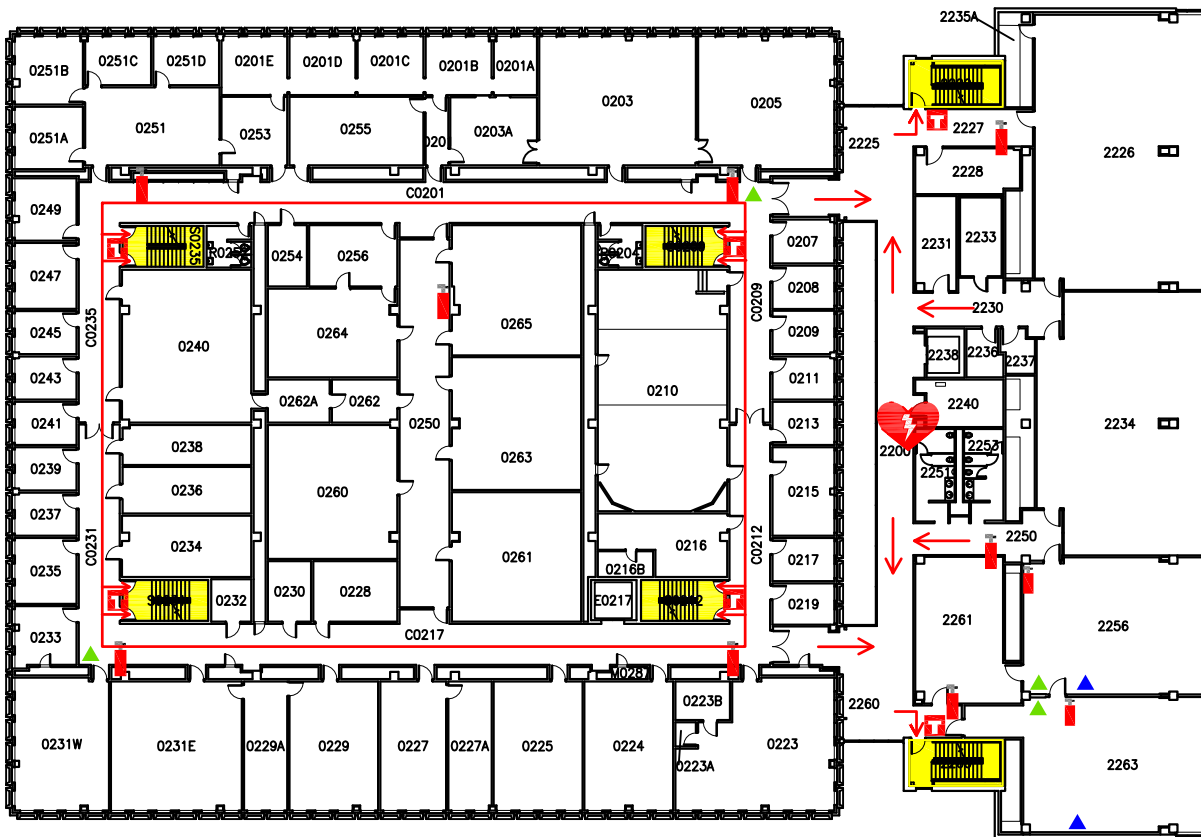


# Bessey Hall Second Floor Emergency Map



## Evacuation Guidelines

- In case of fire or other emergency requiring evacuation, activate the nearest fire alarm pull station.
- Exit in a calm and orderly fashion. Once you have evacuated to a safe location immediately call 911.
- Assist injured personnel, if time permits, and make sure all doors are closed and hazardous work operations are shut down as you exit the building.
- Help any physically impaired individuals in need of assistance.
- **Meeting Place :**

In case of evacuation, meet near the east entrance to Palmer Hall.

## Safety Guidelines

- Familiarize yourself with the location of exits, alarm pull stations, and fire extinguishers.
- Attempt to control a fire yourself with a fire extinguisher only when the fire is small and you have been trained.
- Keep fire doors closed to prevent the spread of smoke and fire.

## Severe Weather

- In the event of severe weather, proceed to an interior hallway in the basement. Keep away from exterior doors and windows.

### Key



Fire Extinguisher



Exit Direction



Exit



AED / Defibrillator



Eye Wash



Fire Alarm Pull



Safety Shower